

Helpful Mailing Tips, updated Aug. 1, 2025

BASIC PRICING INFORMATION

- One Forever Stamp, priced at **78¢**, is generally all that's needed on an envelope weighing 1 ounce or less.
- Envelopes weighing more than 1 ounce, require **29¢** worth of postage for each additional ounce up to 3.5 ounces. There's a Forever Stamp you can purchase to cover this extra 29¢.
- Postage for large envelopes (see Size Requirements below) start at **\$1.63** for 1 ounce, 29¢ for each additional ounce up to 13 ounces.
- Postcard postage is **61¢**. There are Forever postcard stamps.
- International letters of 1 ounce or less require \$1.70 in postage. There are Forever international stamps.

SIZE REQUIREMENTS

- **Envelopes:** Minimum-size 5x3.5-inches, maximum-size 11.5x6-inches. Envelopes must maintain a uniform thickness of no more than 1/4". Square envelopes are NOT approved. When mailing a Square envelope, extra postage is required.
- **Postcards:** Minimum size 5x3.5-inches, maximum size 6x4.25-inches, 0.016-inches thick.

PACKAGE REQUIREMENTS

An envelope will count as a package, if . . .

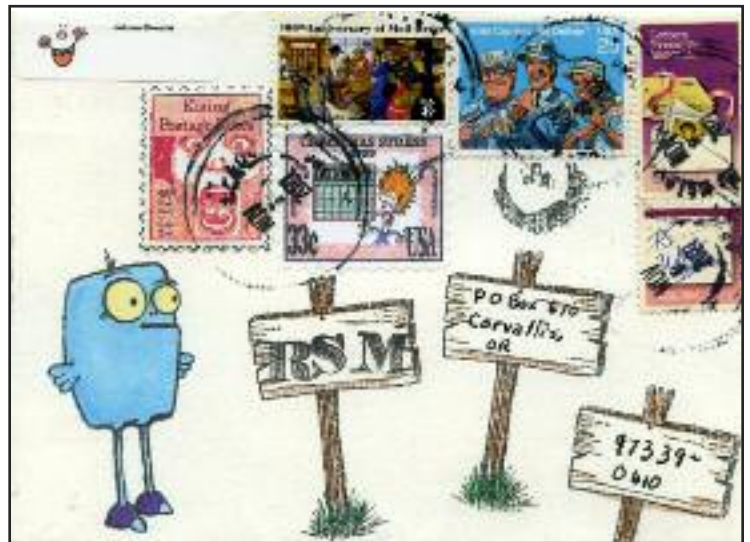
- The envelope does not meet standard dimensions or thickness.
- The envelope is not uniform in size, i.e. lumpy.
- The envelope is rigid—i.e. does not bend.
- You want to add insurance.

SHIPPING OPTIONS

- USPS Ground Advantage Select recommended for mailing packages.
- If you want an envelope or package to arrive in two-to-three days, consider Priority Mail.
- Should you need your envelope or package to arrive in one day, consider Express Mail.

WHEN EXTRA POSTAGE IS NEEDED

- When a postal employee must hand cancel an envelope, it is considered “non-machinable” and extra postage is required. For an envelope, this starts at 49¢. An envelope is non machinable when:
 - 3D embellishments make the envelope lumpy—even with cardboard.
 - You added the request “Do Not Bend” on the envelope.
 - Your envelope has clasps, brads, buttons, string.



Envelope mailed by Joanne Dennis
(Stamp credits—unknown.)

- The envelope is square or over-sized but isn't as big as a “large envelope.”

MAILING SUGGESTIONS

Follow these guidelines to make sure your mail travels smoothly to its destination:

- Protect artwork with no more than a single layer of bubble wrap or lightweight (non-rigid) cardboard on each side. Cereal boxes are an ideal weight.
- If you have several pieces to mail at once, consider sending in a large envelope.
- Art and cardboard should lie flat and measure no more than 1/4" thick.
- If the envelope measures more than 1/4" thick, send cards individually or treat the envelope as a package.

SENDING MAIL TO RUBBERSTAMPMADNESS

- RSM appreciates SASEs (stamped-self-addressed envelopes) with stamp art submissions. If sending stamp art for more than one theme, send one SASE per theme.
- If you don't want your artwork returned, let us know. We can pass along what you send.
- If you live outside the USA consider sending submissions via email to graphics@rsmadness.com. Or consider sending cash for return postage.
- A Customer's Guide to Mailing can be found at usps.com. This includes the information shared here—and more!